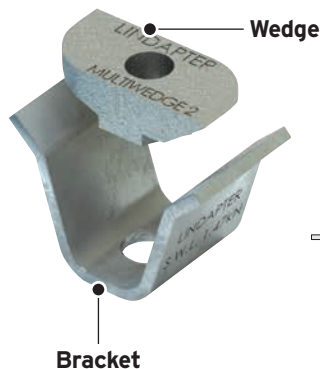


Type MW2 - Multiwedge 2

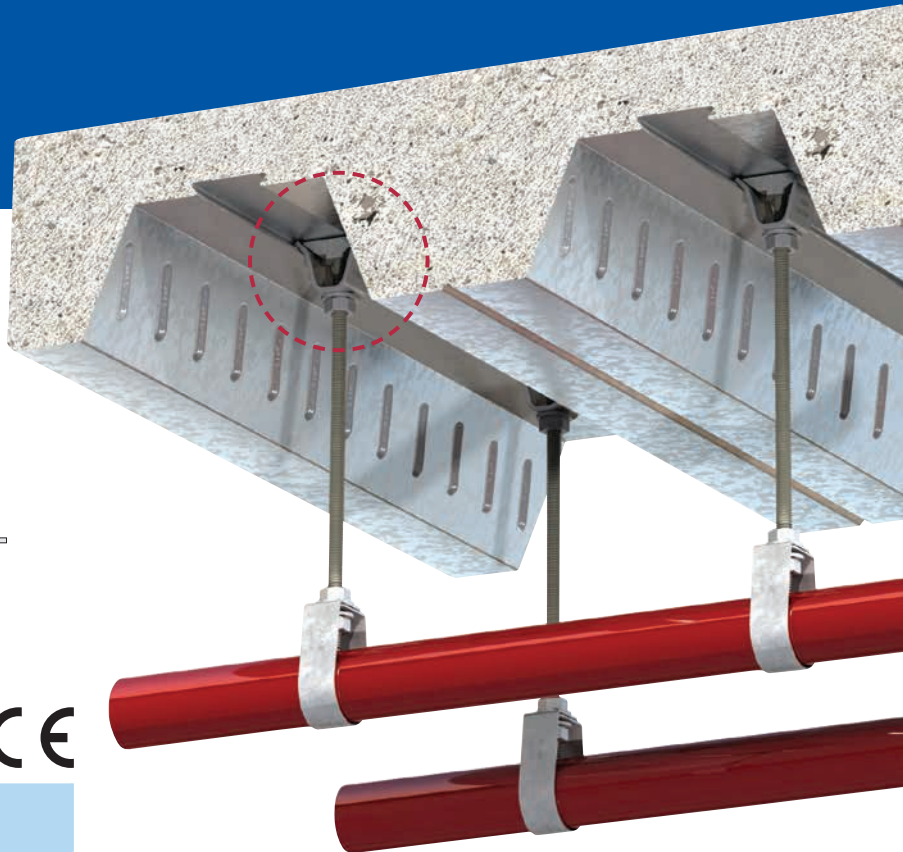
Designed for the Multideck® 60 and Multideck® 80 profiles manufactured by Kingspan® Structural Products.



Bracket: Pre-galvanised strip.
Wedge: Malleable iron, bright zinc plated.



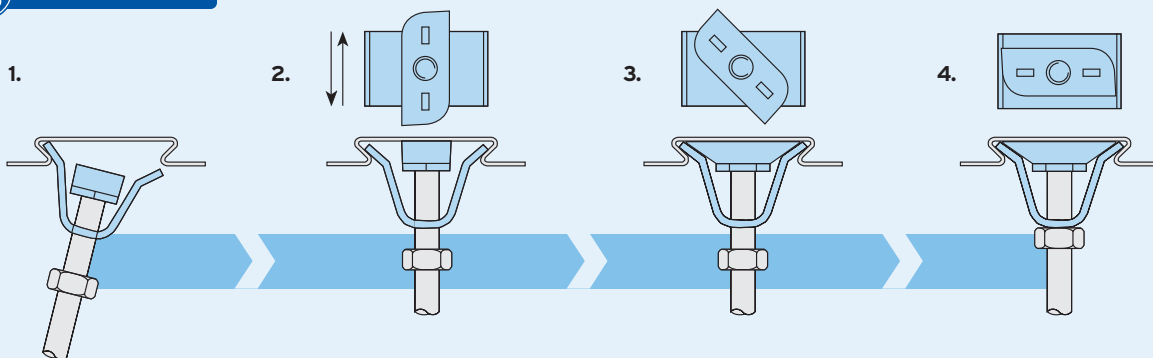
Product Code	Rod min 4.6	Safe Working Load (FOS 3:1)	
		Tensile / 1 Rod kN	Tightening Torque Nm
MW06	M6	1.47	10
MW08	M8	1.47	10
MW10	M10	1.47	10



➤ Although the Type MW2 is similar in appearance to the Type MF (page 63), it should NOT be used in profiles manufactured by CMF®.



How to install...



- 1) Pre-assemble the bracket and wedge (flat surface facing up) onto the threaded rod and insert one side of the bracket into the re-entrant channel of the decking.
- 2) Click the other leg of the bracket into position inside the decking and slide the assembly to the desired position along the length of the re-entrant channel.
- 3) Push and turn the wedge clockwise until it locks into the channel walls.
- 4) Tighten the hexagon nut beneath the assembly.

➤ Install the decking fixings after the concrete has been poured and has reached full strength.

➤ If the decking profile is deformed or distorted, do not install the fixing. If in doubt, contact the Technical Support team for advice.



For Characteristic Resistances when designing a connection to Eurocode 3, please refer to DoP No.019 on the website www.Lindapter.com

