

# PAP Pipe Anchor (Copper)

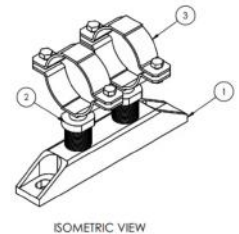
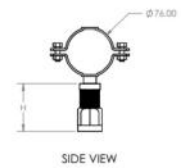
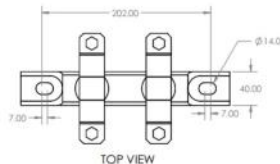
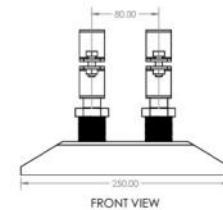


## Design Features

- Double M16 Connections to pipe clips
- Electro Painted and/or Zinc Nickel Finish
- Available with Short or Long height adjustable sockets
- EP Clips Supplied
- Recommended that Pipe Stops are used, please refer to install instructions

## Product Description

Designed to stop axial, lateral and vertical movement of pipe. These can be floor, ceiling or wall mounted. Designed with height adjustable to aid installation,



Part Number	Clip to fit pipe OD (mm)	Max Temp	Load Axial	Load Vertical	Load Lateral
NS-PAP-CU-15mm	15	200	9kN	9kN	9kN
NS-PAP-CU-22mm	22	200	9kN	9kN	9kN
NS-PAP-CU-28mm	28	200	9kN	9kN	9kN
NS-PAP-CU-35mm	35	200	9kN	9kN	9kN
NS-PAP-CU-42mm	42	200	9kN	9kN	9kN
NS-PAP-CU-54mm	54	200	9kN	9kN	9kN
NS-PAP-CU-67mm	67	200	9kN	9kN	9kN
NS-PAP-CU-76mm	76	200	9kN	9kN	9kN