

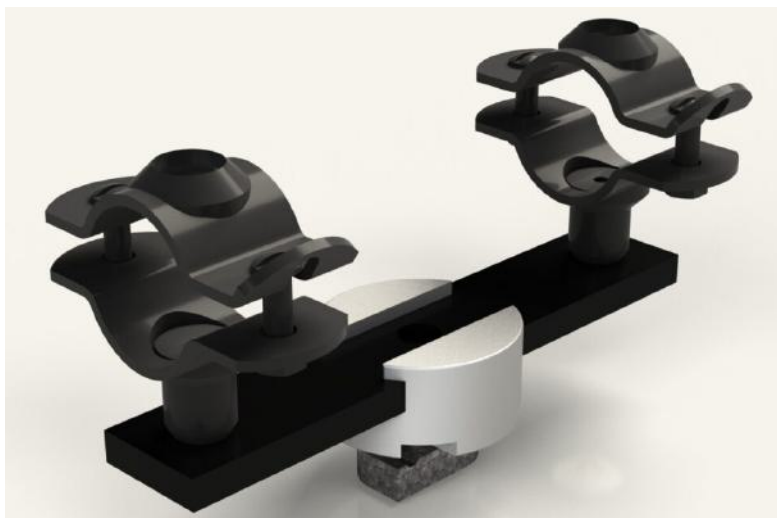
Strut Mounted Slide Guide Support



Product Description

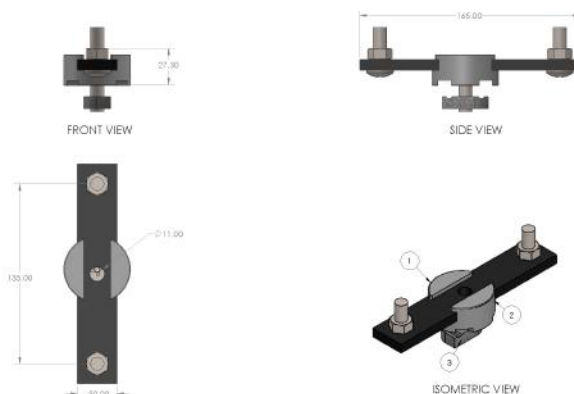
Designed to allow free axial movement of pipe while restricting lateral or vertical movement. These are purposely designed for the challenging application such as primary guides for expansion joints.

These can be floor or ceiling mounted and are suitable for connections to strut profiles.



Design Features

- Double M10 Connections to pipe clips
- Electro Painted and Zinc plated finish
- Low Friction Slide Insert
- Complete with appropriate EP Coated clips



Part Number	Clips to fit pipe OD (mm)	Maximum Travel	Load Vertical (Hung)	Load Vertical (Sat)	Load Lateral
NS-LWPG-CU-15mm	15	70mm	5kN	5kN	2.5kN
NS-LWPG-CU-22mm	22	70mm	5kN	5kN	2.5kN
NS-LWPG-CU-28mm	28	70mm	5kN	5kN	2.5kN
NS-LWPG-CU-35mm	35	70mm	5kN	5kN	2.5kN
NS-LWPG-CU-42mm	42	70mm	5kN	5kN	2.5kN
NS-LWPG-CU-54mm	54	70mm	5kN	5kN	2.5kN