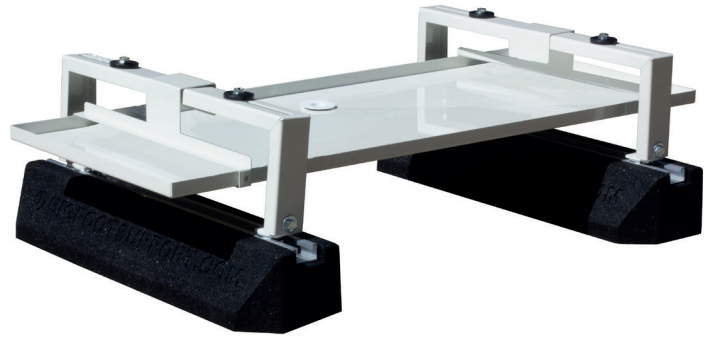


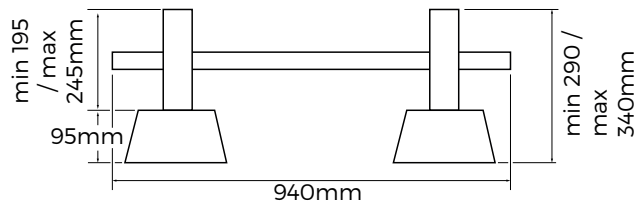
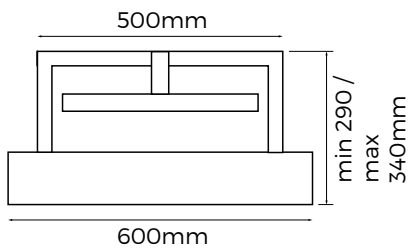
Heat Pump Drip Tray Kit



KEY FEATURES

- Drip Tray, Feet and bracket pack all in one box kit
- Anti vibration Big Foot Fix-It feet 600 included
- min 290 / max 340mm Ground clearance for better airflow around heat pump
- Hi Bloc feet available as optional accessories to increase ground clearance
- Metal work in RAL9002 colour
- Made from 20/10 Galvanised Steel
- Polyester powder coated finish (approx 100µm thickness)
- M8 8.8 zinc passivated carbon steel high strength fixings included

Description	Part no.	Width (mm)	Height (mm)	Depth (mm)	Working Load (Kg)	Max. Load (Kg)
Heat Pump Drip Tray Kit	B2075	940	min 290/ max 340mm	420 (Drip Tray) 600 (Feet)	300kg	300kg



Extra clearance can be created using a **High Bloc** which fits underneath.

- Quick and simple install.

